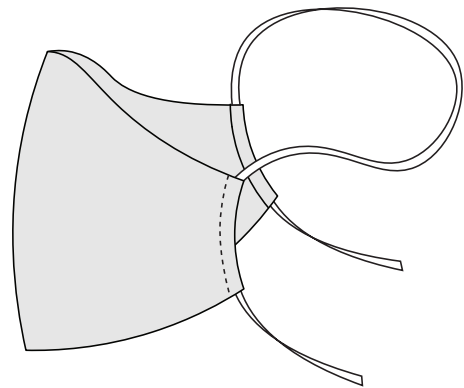
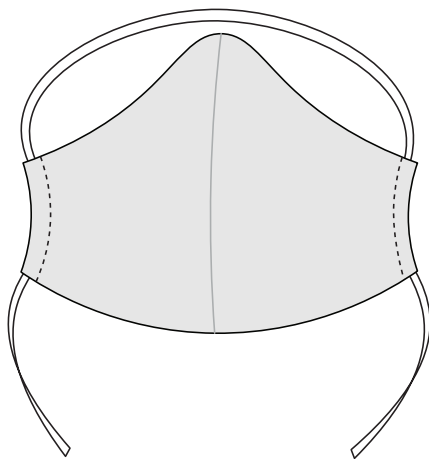
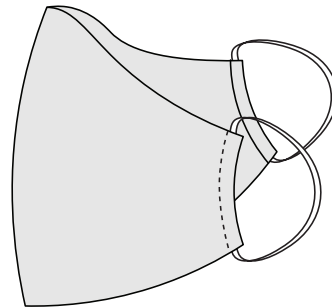
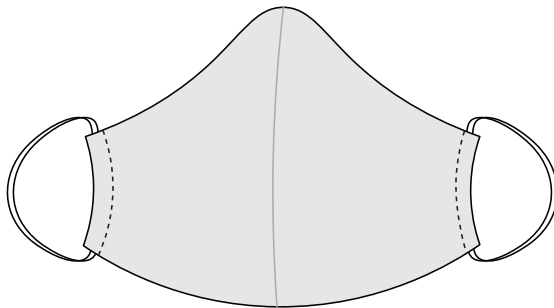


## Shaped Face Covering

This face covering is made from two layers of fabric - the outer layer and the lining - and has a curved seam down the front to create a snug fit.



### WHAT YOU NEED

- Your fabric
- Pins
- Fabric scissors
- A sewing machine OR a hand sewing needle
- Thread
- For ear loops: elastic - two hair elastics are ideal, or two lengths of elastic 15cm long
- For head ties: ribbon or ¼" wide elastic (or thereabouts) long enough to go around your head twice

### RECOMMENDED FABRICS

A tightly woven lightweight cotton is ideal; quilting cotton or poly cotton. You could even harvest fabric from an old pillow case or shirt. Avoid stretchy fabrics, and synthetics that aren't breathable.

### PRINTING YOUR PATTERN

Download the pattern and open the file with a PDF reader such as Preview or Adobe Reader. In your print preview, make sure that you choose to print 'actual size' or 100% scale and not 'scale to fit'.

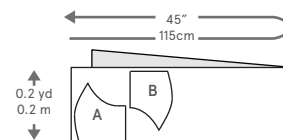
### FABRIC REQUIRED

You can fit 2 masks, or 2 of pattern piece A and 2 of pattern piece B, on a 115cm wide piece of fabric.

45" / 115cm wide

Adult: 8" / 20cm

Child: 6" / 16cm



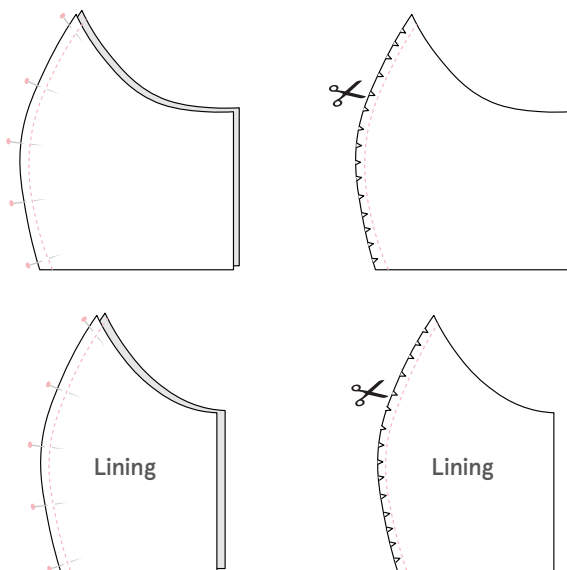
### PATTERN KEY

- A Fabric pattern piece - cut 1 pair
- A Lining pattern piece - cut 1 pair

Right Side

Wrong Side

Sew off you go!  
(sorry, couldn't resist...)



Seam allowances are 1cm

### 1. Cut and prep your fabric

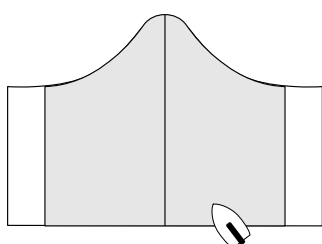
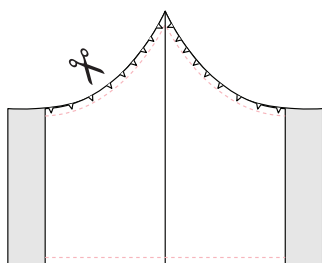
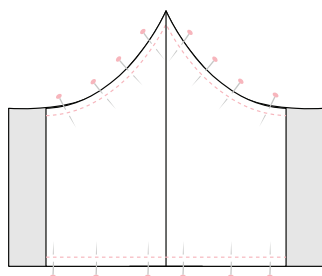
- Use the pattern provided to cut two layers of fabric for the outer layer of your face covering and two layers for the lining.

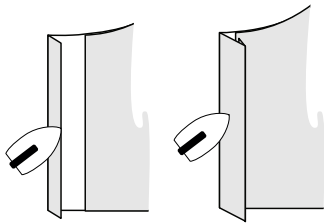
### 2. Sewing the curved seam

- With right sides together, pin the two outer layers at the curve. Stitch, remembering to backstitch the beginning and end of your line of stitching.
- Snip little Vs into the seam allowance - this helps to reduce bulk at the seam - and press open.
- Repeat for the lining pieces.

### 3. Joining the outer layer and lining

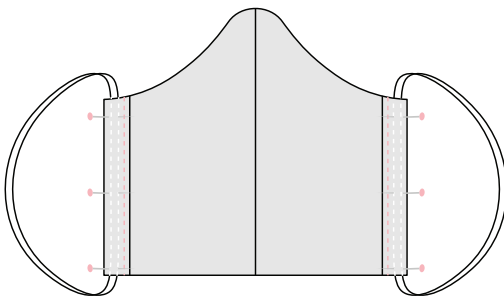
- Place your two layers of fabric together, right sides facing, and pin all along the top and bottom edges matching the centre front seam. You'll note that the lining is shorter than the outer layer at the sides.
- Stitch, and then carefully snip into the seam allowance at the curved top edge - this will help the seam to sit flat when you turn it out to the right side.
- Turn out to the right side and give it a good press.





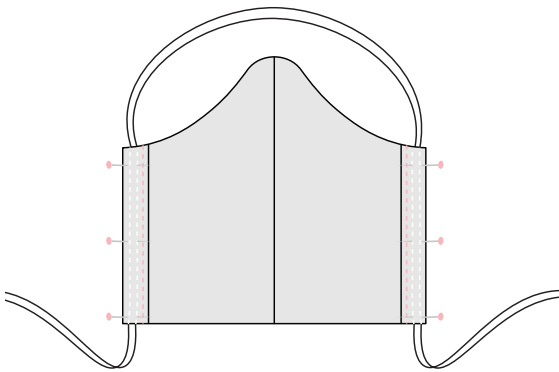
#### 4. Create the elastic channels

- Fold and press the two side edges of the face covering to the inside by 0.5cm, and then again by 2cm. If you are using hair elastics, slip them into the channel before you stitch. Topstitch close to the fold.

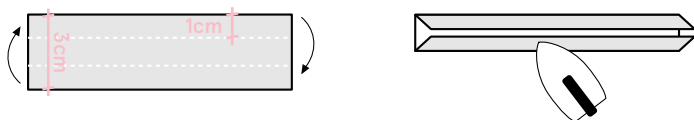


#### 5. Finishing your face covering

- If you are using lengths of elastic as opposed to hair elastics, feed one end through the channel and then tie the ends into a knot to create the ear loop.
- If you are using a ribbon to tie around your head, use a safety pin to feed it through the bottom of one channel and down the channel on the other side and adjust to fit your head.
- If you are using an elastic to go around your head, use a safety pin to feed it through the bottom of one channel and down the channel on the other side, adjust to fit your head and then stitch the two ends together securely with a zigzag stitch.

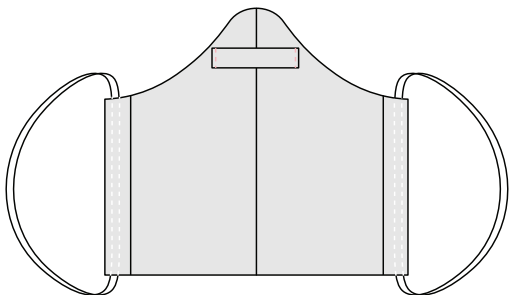
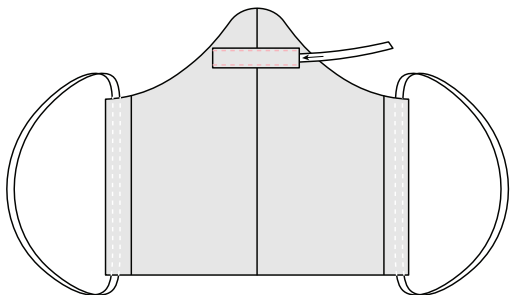
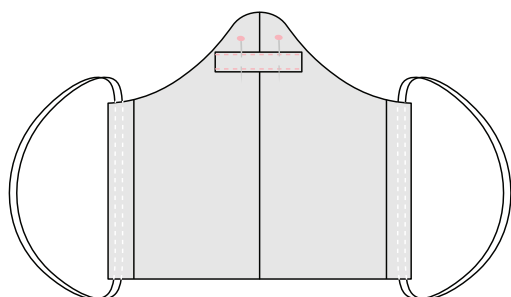


## Variations



### Nose wire

- Cut a strip of fabric about 10cm x 3cm and press the two long edges in by 1cm.
- Pin and stitch this channel into place along the middle of the top line of the inside of your face covering close to the folded edges of the strip.
- Feed a length of wire through this channel and then stitch the two short ends closed.
- Now you can mold this wire over the bridge of your nose for a closer fit.



## Love what you made?

Well, show us! You can share your photos with us by tagging us @bigcommunitysew on Instagram so we can marvel at your creations. Be sure to use the hashtag #bigcommunitysew so we can find you!

Enormous thanks goes to **By Hand London** sewing patterns for creating these patterns and sewing instructions exclusively for **Big Community Sew**